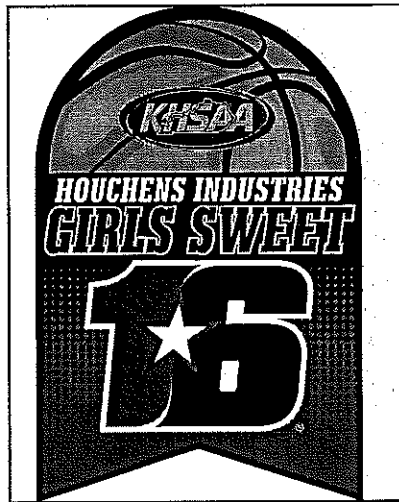


**2012 Houchens Industries/KHSAA  
Girls' Sweet Sixteen® State Basketball Tournament**



**Final Game Stats  
Session 3  
Game 1**

**HOPKINSVILLE  
vs.  
MARSHALL COUNTY**

**March 7-10  
WKU E.A. Diddle Arena  
Bowling Green**





**Official Basketball Box Score -- Game Totals -- Final Statistics**  
**MARSHALL COUNTY vs HOPKINSVILLE**  
 03/08/12 12 NOON CST at DIDDLE ARENA-BOWLING GREEN, KY



**MARSHALL COUNTY 52 • 27-9**

| ##            | Player             |   | Total        |             | 3-Ptr       | Rebounds  |           |           | PF        | TP        | A        | TO        | Blk      | Stl      | Min        |
|---------------|--------------------|---|--------------|-------------|-------------|-----------|-----------|-----------|-----------|-----------|----------|-----------|----------|----------|------------|
|               |                    |   | FG-FGA       | FG-FGA      | FT-FTA      | Off       | Def       | Tot       |           |           |          |           |          |          |            |
| 32            | REED, RACHAEL      | c | 0-0          | 0-0         | 1-2         | 0         | 0         | 0         | 1         | 1         | 0        | 0         | 0        | 0        | 13         |
| 10            | FEHRENBACHER, TORY | g | 3-5          | 1-1         | 4-10        | 1         | 1         | 2         | 3         | 11        | 1        | 4         | 0        | 3        | 28         |
| 14            | MEADOWS, TAYLOR    | g | 3-10         | 1-4         | 1-2         | 0         | 3         | 3         | 2         | 8         | 0        | 3         | 0        | 0        | 24         |
| 15            | MCKENTY, MARIAH    | g | 5-10         | 4-8         | 1-2         | 1         | 3         | 4         | 1         | 15        | 2        | 3         | 0        | 3        | 31         |
| 20            | YORK, ALLIE        | g | 2-4          | 1-1         | 0-0         | 2         | 2         | 4         | 1         | 5         | 2        | 1         | 0        | 0        | 30         |
| 04            | GREER, BAILEY      |   | 0-0          | 0-0         | 0-0         | 0         | 0         | 0         | 0         | 0         | 0        | 0         | 0        | 0        | 0+         |
| 11            | MCKENDREE, MELANIE |   | 0-0          | 0-0         | 0-0         | 0         | 0         | 0         | 0         | 0         | 0        | 0         | 0        | 0        | 0+         |
| 21            | FEHRENBACHER, TONI |   | 1-7          | 0-0         | 0-1         | 1         | 0         | 1         | 0         | 2         | 1        | 1         | 0        | 0        | 13         |
| 33            | YORK, CAITLYN      |   | 0-0          | 0-0         | 0-0         | 0         | 0         | 0         | 0         | 0         | 0        | 0         | 0        | 0        | 0+         |
| 35            | BROWN, ALEX        |   | 1-1          | 0-0         | 0-0         | 0         | 2         | 2         | 0         | 2         | 0        | 0         | 2        | 1        | 9          |
| 43            | BARNARD, ALYSSA    |   | 4-5          | 0-0         | 0-0         | 4         | 7         | 11        | 4         | 8         | 1        | 1         | 2        | 0        | 12         |
| Team          |                    |   |              |             |             | 2         | 3         | 5         |           |           |          | 1         |          |          |            |
| <b>Totals</b> |                    |   | <b>19-42</b> | <b>7-14</b> | <b>7-17</b> | <b>11</b> | <b>21</b> | <b>32</b> | <b>12</b> | <b>52</b> | <b>7</b> | <b>14</b> | <b>4</b> | <b>7</b> | <b>160</b> |

FG % 1st Half: 9-21 42.9% 2nd half: 10-21 47.6% Game: 19-42 45.2%  
 3FG % 1st Half: 3-6 50.0% 2nd half: 4-8 50.0% Game: 7-14 50.0%  
 FT % 1st Half: 5-10 50.0% 2nd half: 2-7 28.6% Game: 7-17 41.2%

Deadball  
Rebounds  
4

**HOPKINSVILLE 56 • 32-4**

| ##            | Player          |   | Total        |            | 3-Ptr       | Rebounds |           |           | PF        | TP        | A         | TO       | Blk      | Stl      | Min        |
|---------------|-----------------|---|--------------|------------|-------------|----------|-----------|-----------|-----------|-----------|-----------|----------|----------|----------|------------|
|               |                 |   | FG-FGA       | FG-FGA     | FT-FTA      | Off      | Def       | Tot       |           |           |           |          |          |          |            |
| 05            | SOLDO, CHRISTY  | f | 11-17        | 0-0        | 2-2         | 2        | 5         | 7         | 2         | 24        | 2         | 2        | 2        | 1        | 31         |
| 20            | COLE, ASHLEE    | f | 1-3          | 0-0        | 3-4         | 3        | 4         | 7         | 1         | 5         | 3         | 0        | 0        | 1        | 28         |
| 21            | DUVALL, MADISON | f | 3-6          | 0-0        | 0-0         | 2        | 4         | 6         | 1         | 6         | 1         | 0        | 0        | 0        | 25         |
| 22            | COOK, HALEY     | g | 4-10         | 3-5        | 1-2         | 0        | 0         | 0         | 1         | 12        | 0         | 4        | 0        | 0        | 29         |
| 32            | MAJORS, JLYNN   | g | 2-6          | 0-1        | 1-3         | 0        | 2         | 2         | 4         | 5         | 5         | 1        | 0        | 5        | 32         |
| 23            | CAGER, TRINA    |   | 1-4          | 1-2        | 1-2         | 0        | 3         | 3         | 2         | 4         | 1         | 0        | 0        | 1        | 12         |
| 33            | CABINESS, LEXUS |   | 0-2          | 0-0        | 0-0         | 1        | 0         | 1         | 0         | 0         | 0         | 1        | 0        | 0        | 3          |
| Team          |                 |   |              |            |             | 1        | 0         | 1         |           |           |           |          |          |          |            |
| <b>Totals</b> |                 |   | <b>22-48</b> | <b>4-8</b> | <b>8-13</b> | <b>9</b> | <b>18</b> | <b>27</b> | <b>11</b> | <b>56</b> | <b>12</b> | <b>8</b> | <b>2</b> | <b>8</b> | <b>160</b> |

FG % 1st Half: 13-25 52.0% 2nd half: 9-23 39.1% Game: 22-48 45.8%  
 3FG % 1st Half: 4-6 66.7% 2nd half: 0-2 0.0% Game: 4-8 50.0%  
 FT % 1st Half: 1-2 50.0% 2nd half: 7-11 63.6% Game: 8-13 61.5%

Deadball  
Rebounds  
1

Officials: KRISTIE COMBS, JEFFREY ELY, JUDITH DYEHOUSE  
 Technical fouls: MARSHALL COUNTY-None. HOPKINSVILLE-None.  
 Attendance:

| Score by periods | 1st | 2nd | 3rd | 4th | Total     |
|------------------|-----|-----|-----|-----|-----------|
| MARSHALL COUNTY  | 16  | 10  | 15  | 11  | <b>52</b> |
| HOPKINSVILLE     | 16  | 15  | 15  | 10  | <b>56</b> |

|        | In    | Off | 2nd    | Fast  |       |
|--------|-------|-----|--------|-------|-------|
| Points | Paint | T/O | Chance | Break | Bench |
| MARSHA | 16    | 11  | 11     | 0     | 12    |
| HOPKIN | 20    | 11  | 12     | 2     | 4     |

Last FG - MARSHALL 4th-01:09, HOPKINS 4th-00:43.  
 Largest lead - MARSHALL by 2 1st-07:10, HOPKINS by 14 3rd-05:16.

Score tied - 2 times.  
 Lead changed - 3 times.



**MARSHALL COUNTY vs HOPKINSVILLE**  
 03/08/12 12 NOON CST at DIDDLE ARENA-BOWLING GREEN, KY  
 1st PERIOD Play-by-Play (Page 1)



| HOME TEAM: HOPKINSVILLE               | Time  | Score | Margin | VISITORS: MARSHALL COUNTY            |
|---------------------------------------|-------|-------|--------|--------------------------------------|
| TURNOVR by COOK, HALEY                | 07:45 |       |        |                                      |
|                                       | 07:44 |       |        | STEAL by MCKENTY, MARIAH             |
|                                       | 07:10 | 0-2   | V 2    | GOOD! JUMPER by FEHRENBACHER, TORY [ |
| MISSED JUMPER by DUVALL, MADISON      | 06:58 |       |        | REBOUND (DEF) by YORK, ALLIE         |
| REBOUND (DEF) by MAJORS, JLYNN        | 06:47 |       |        | MISSED 3 PTR by MEADOWS, TAYLOR      |
| GOOD! LAYUP by SOLDI, CHRISTY [PNT]   | 06:21 | 2-2   | T 1    |                                      |
| ASSIST by COLE, ASHLEE                | 06:21 |       |        |                                      |
| REBOUND (DEF) by SOLDI, CHRISTY       | 05:47 |       |        | MISSED JUMPER by YORK, ALLIE         |
| GOOD! JUMPER by SOLDI, CHRISTY [PNT]  | 05:37 | 4-2   | H 2    |                                      |
| REBOUND (DEF) by DUVALL, MADISON      | 05:18 |       |        | MISSED 3 PTR by MCKENTY, MARIAH      |
| GOOD! LAYUP by SOLDI, CHRISTY [PNT]   | 04:56 | 6-2   | H 4    |                                      |
| ASSIST by MAJORS, JLYNN               | 04:56 |       |        |                                      |
|                                       | 04:43 | 6-4   | H 2    | GOOD! LAYUP by MEADOWS, TAYLOR [PNT] |
| GOOD! JUMPER by COOK, HALEY [PNT]     | 04:20 | 8-4   | H 4    |                                      |
| FOUL by MAJORS, JLYNN (P1T1)          | 04:00 | 8-5   | H 3    | GOOD! FT SHOT by FEHRENBACHER, TORY  |
| REBOUND (DEF) by SOLDI, CHRISTY       | 04:00 |       |        | MISSED FT SHOT by FEHRENBACHER, TORY |
|                                       | 04:00 |       |        | SUB IN : FEHRENBACHER, TONI          |
|                                       | 04:00 |       |        | SUB IN : BARNARD, ALYSSA             |
|                                       | 04:00 |       |        | SUB OUT: MEADOWS, TAYLOR             |
|                                       | 04:00 |       |        | SUB OUT: REED, RACHAEL               |
| GOOD! 3 PTR by COOK, HALEY            | 03:49 | 11-5  | H 6    |                                      |
| ASSIST by COLE, ASHLEE                | 03:49 |       |        |                                      |
| REBOUND (DEF) by COLE, ASHLEE         | 03:37 |       |        | MISSED JUMPER by FEHRENBACHER, TONI  |
|                                       | 03:31 |       |        | FOUL by MCKENTY, MARIAH (P1T1)       |
|                                       | 03:31 |       |        | SUB IN : MEADOWS, TAYLOR             |
|                                       | 03:31 |       |        | SUB OUT: MCKENTY, MARIAH             |
| MISSED 3 PTR by COOK, HALEY           | 03:26 |       |        | REBOUND (DEF) by FEHRENBACHER, TORY  |
|                                       | 02:57 | 11-8  | H 3    | GOOD! 3 PTR by YORK, ALLIE           |
|                                       | 02:57 |       |        | ASSIST by BARNARD, ALYSSA            |
| MISSED LAYUP by COOK, HALEY           | 02:47 |       |        |                                      |
|                                       | 02:44 |       |        | BLOCK by BARNARD, ALYSSA             |
|                                       | 02:43 |       |        | REBOUND (DEF) by MEADOWS, TAYLOR     |
|                                       | 02:40 | 11-10 | H 1    | GOOD! LAYUP by MEADOWS, TAYLOR [PNT] |
|                                       | 02:13 |       |        | FOUL by BARNARD, ALYSSA (P1T2)       |
| TIMEOUT MEDIA                         | 02:13 |       |        |                                      |
| GOOD! FT SHOT by COOK, HALEY          | 02:13 | 12-10 | H 2    |                                      |
| MISSED FT SHOT by COOK, HALEY         | 02:13 |       |        |                                      |
| SUB IN : CAGER, TRINA                 | 02:13 |       |        | SUB IN : MCKENTY, MARIAH             |
| SUB OUT: COOK, HALEY                  | 02:13 |       |        | SUB OUT: YORK, ALLIE                 |
|                                       | 02:12 |       |        | REBOUND (DEF) by (TEAM)              |
| STEAL by CAGER, TRINA                 | 01:58 |       |        | TURNOVR by FEHRENBACHER, TONI        |
|                                       | 01:58 |       |        | SUB IN : YORK, ALLIE                 |
|                                       | 01:58 |       |        | SUB OUT: FEHRENBACHER, TONI          |
| MISSED JUMPER by SOLDI, CHRISTY       | 01:45 |       |        |                                      |
| REBOUND (OFF) by COLE, ASHLEE         | 01:45 |       |        |                                      |
| MISSED JUMPER by SOLDI, CHRISTY       | 01:39 |       |        |                                      |
| REBOUND (OFF) by DUVALL, MADISON      | 01:39 |       |        |                                      |
| GOOD! TIP-IN by DUVALL, MADISON [PNT] | 01:37 | 14-10 | H 4    |                                      |
|                                       | 01:26 | 14-13 | H 1    | GOOD! 3 PTR by MEADOWS, TAYLOR       |
|                                       | 01:26 |       |        | ASSIST by MCKENTY, MARIAH            |
| MISSED JUMPER by SOLDI, CHRISTY       | 01:10 |       |        | REBOUND (DEF) by BARNARD, ALYSSA     |
| FOUL by CAGER, TRINA (P1T2)           | 01:01 |       |        |                                      |
| REBOUND (DEF) by COLE, ASHLEE         | 01:01 |       |        | MISSED JUMPER by YORK, ALLIE         |
| SUB IN : COOK, HALEY                  | 01:01 |       |        | SUB IN : BROWN, ALEX                 |
| SUB OUT: SOLDI, CHRISTY               | 01:01 |       |        | SUB OUT: BARNARD, ALYSSA             |
| GOOD! JUMPER by DUVALL, MADISON       | 00:52 | 16-13 | H 3    |                                      |
| ASSIST by MAJORS, JLYNN               | 00:52 |       |        |                                      |
|                                       | 00:20 | 16-15 | H 1    | GOOD! JUMPER by BROWN, ALEX [PNT]    |
|                                       | 00:20 |       |        | ASSIST by MCKENTY, MARIAH            |
| TURNOVR by MAJORS, JLYNN              | 00:09 |       |        |                                      |



**MARSHALL COUNTY vs HOPKINSVILLE**  
**03/08/12 12 NOON CST at DIDDLE ARENA-BOWLING GREEN, KY**  
**1st PERIOD Play-by-Play (Page 2)**



| <b>HOME TEAM: HOPKINSVILLE</b>  | <b>Time</b> | <b>Score</b> | <b>Margin</b> | <b>VISITORS: MARSHALL COUNTY</b>     |
|---------------------------------|-------------|--------------|---------------|--------------------------------------|
| FOUL by COOK, HALEY (P1T3)      | 00:05       | 16-16        | T 2           | GOOD! FT SHOT by FEHRENBACHER, TORY  |
|                                 | 00:05       |              |               | MISSED FT SHOT by FEHRENBACHER, TORY |
|                                 | 00:05       |              |               | REBOUND (OFF) by FEHRENBACHER, TONI  |
| REBOUND (DEF) by SOLDI, CHRISTY | 00:05       |              |               | MISSED TIP-IN by FEHRENBACHER, TONI  |
| SUB IN : SOLDI, CHRISTY         | 00:05       |              |               | SUB IN : FEHRENBACHER, TONI          |
| SUB OUT: COLE, ASHLEE           | 00:05       |              |               | SUB IN : MCKENDREE, MELANIE          |
|                                 | 00:05       |              |               | SUB IN : YORK, CAITLYN               |
|                                 | 00:05       |              |               | SUB OUT: MCKENTY, MARIAH             |
|                                 | 00:05       |              |               | SUB OUT: BROWN, ALEX                 |
|                                 | 00:05       |              |               | SUB OUT: MEADOWS, TAYLOR             |

HOPKINSVILLE 16, MARSHALL COUNTY 16

|                 | In    | Off | 2nd    | Fast  |       |                        |
|-----------------|-------|-----|--------|-------|-------|------------------------|
| 1st period-only | Paint | T/O | Chance | Break | Bench |                        |
| MARSHALL COUNTY | 8     | 3   | 0      | 0     | 2     | Score tied - 2 times.  |
| HOPKINSVILLE    | 10    | 2   | 2      | 0     | 0     | Lead changed - 1 time. |

**MARSHALL COUNTY vs HOPKINSVILLE**  
 03/08/12 12 NOON CST at DIDDLE ARENA-BOWLING GREEN, KY  
 2nd PERIOD Play-by-Play (Page 1)



| HOME TEAM: HOPKINSVILLE              | Time  | Score | Margin | VISITORS: MARSHALL COUNTY             |
|--------------------------------------|-------|-------|--------|---------------------------------------|
| SUB IN : CAGER, TRINA                | 08:00 |       |        | SUB IN : BROWN, ALEX                  |
| SUB OUT: COLE, ASHLEE                | 08:00 |       |        | SUB OUT: REED, RACHAEL                |
|                                      | 07:52 |       |        | TURNOVR by MCKENTY, MARIAH            |
| STEAL by MAJORS, JLYNN               | 07:51 |       |        |                                       |
| GOOD! 3 PTR by COOK, HALEY           | 07:36 | 19-16 | H 3    |                                       |
| ASSIST by MAJORS, JLYNN              | 07:36 |       |        |                                       |
| FOUL by DUVALL, MADISON (P1T4)       | 07:22 | 19-17 | H 2    | GOOD! FT SHOT by MEADOWS, TAYLOR      |
| REBOUND (DEF) by DUVALL, MADISON     | 07:22 |       |        | MISSED FT SHOT by MEADOWS, TAYLOR     |
| MISSED JUMPER by CAGER, TRINA        | 07:16 |       |        | REBOUND (DEF) by BROWN, ALEX          |
|                                      | 06:56 |       |        | TURNOVR by FEHRENBACHER, TORY         |
| SUB IN : COLE, ASHLEE                | 06:56 |       |        |                                       |
| SUB OUT: DUVALL, MADISON             | 06:56 |       |        |                                       |
| TURNOVR by SOLDI, CHRISTY            | 06:33 |       |        |                                       |
|                                      | 06:31 |       |        | STEAL by BROWN, ALEX                  |
| REBOUND (DEF) by CAGER, TRINA        | 06:29 |       |        | MISSED LAYUP by MEADOWS, TAYLOR       |
|                                      | 06:23 |       |        | SUB IN : FEHRENBACHER, TONI           |
|                                      | 06:23 |       |        | SUB IN : BARNARD, ALYSSA              |
|                                      | 06:23 |       |        | SUB OUT: FEHRENBACHER, TORY           |
|                                      | 06:23 |       |        | SUB OUT: BROWN, ALEX                  |
| GOOD! 3 PTR by CAGER, TRINA          | 06:12 | 22-17 | H 5    |                                       |
| ASSIST by MAJORS, JLYNN              | 06:12 |       |        |                                       |
|                                      | 06:01 | 22-20 | H 2    | GOOD! 3 PTR by MCKENTY, MARIAH        |
| GOOD! 3 PTR by COOK, HALEY           | 05:44 | 25-20 | H 5    |                                       |
| ASSIST by SOLDI, CHRISTY             | 05:44 |       |        |                                       |
| REBOUND (DEF) by MAJORS, JLYNN       | 05:29 |       |        | MISSED 3 PTR by MCKENTY, MARIAH       |
| MISSED JUMPER by COLE, ASHLEE        | 05:20 |       |        | BLOCK by BARNARD, ALYSSA              |
|                                      | 05:18 |       |        | REBOUND (DEF) by BARNARD, ALYSSA      |
|                                      | 05:11 |       |        | MISSED JUMPER by FEHRENBACHER, TONI   |
|                                      | 05:11 |       |        | REBOUND (OFF) by BARNARD, ALYSSA      |
|                                      | 05:08 | 25-22 | H 3    | GOOD! TIP-IN by BARNARD, ALYSSA [PNT] |
|                                      | 04:36 |       |        | SUB IN : FEHRENBACHER, TORY           |
|                                      | 04:36 |       |        | SUB OUT: MEADOWS, TAYLOR              |
| TURNOVR by COOK, HALEY               | 04:35 |       |        |                                       |
|                                      | 04:34 |       |        | STEAL by FEHRENBACHER, TORY           |
| FOUL by CAGER, TRINA (P2T5)          | 04:32 |       |        | MISSED FT SHOT by FEHRENBACHER, TORY  |
|                                      | 04:32 |       |        | REBOUND (OFF) by (DEADBALL)           |
|                                      | 04:32 | 25-23 | H 2    | GOOD! FT SHOT by FEHRENBACHER, TORY   |
|                                      | 04:32 |       |        | SUB IN : REED, RACHAEL                |
|                                      | 04:32 |       |        | SUB OUT: BARNARD, ALYSSA              |
| GOOD! JUMPER by SOLDI, CHRISTY [PNT] | 04:19 | 27-23 | H 4    | MISSED JUMPER by FEHRENBACHER, TONI   |
| REBOUND (DEF) by CAGER, TRINA        | 03:57 |       |        |                                       |
| TURNOVR by SOLDI, CHRISTY            | 03:29 |       |        |                                       |
|                                      | 03:28 |       |        | STEAL by FEHRENBACHER, TORY           |
|                                      | 03:25 |       |        | MISSED LAYUP by FEHRENBACHER, TORY    |
|                                      | 03:25 |       |        | REBOUND (OFF) by YORK, ALLIE          |
| FOUL by MAJORS, JLYNN (P2T6)         | 03:15 |       |        | MISSED FT SHOT by REED, RACHAEL       |
|                                      | 03:15 |       |        | REBOUND (OFF) by (DEADBALL)           |
|                                      | 03:15 | 27-24 | H 3    | GOOD! FT SHOT by REED, RACHAEL        |
|                                      | 03:15 |       |        | SUB IN : BARNARD, ALYSSA              |
| SUB IN : CABINESS, LEXUS             | 03:15 |       |        | SUB IN : BROWN, ALEX                  |
| SUB IN : DUVALL, MADISON             | 03:15 |       |        | SUB IN : MEADOWS, TAYLOR              |
| SUB OUT: CAGER, TRINA                | 03:15 |       |        | SUB OUT: FEHRENBACHER, TONI           |
| SUB OUT: COLE, ASHLEE                | 03:15 |       |        | SUB OUT: REED, RACHAEL                |
|                                      | 03:15 |       |        | SUB OUT: YORK, ALLIE                  |
|                                      | 03:15 |       |        | FOUL by BARNARD, ALYSSA (P2T3)        |
|                                      | 03:07 |       |        | SUB IN : REED, RACHAEL                |
|                                      | 03:07 |       |        | SUB OUT: BARNARD, ALYSSA              |
| GOOD! JUMPER by DUVALL, MADISON      | 02:47 | 29-24 | H 5    |                                       |
| ASSIST by SOLDI, CHRISTY             | 02:47 |       |        |                                       |
|                                      | 02:31 |       |        | TURNOVR by FEHRENBACHER, TORY         |



**MARSHALL COUNTY vs HOPKINSVILLE**  
 03/08/12 12 NOON CST at DIDDLE ARENA-BOWLING GREEN, KY  
 2nd PERIOD Play-by-Play (Page 2)



| <b>HOME TEAM: HOPKINSVILLE</b>   | <b>Time</b> | <b>Score</b> | <b>Margin</b> | <b>VISITORS: MARSHALL COUNTY</b>     |
|----------------------------------|-------------|--------------|---------------|--------------------------------------|
|                                  | 02:31       |              |               | SUB IN : YORK, ALLIE                 |
|                                  | 02:31       |              |               | SUB OUT: REED, RACHAEL               |
| TURNOVR by CABINESS, LEXUS       | 02:18       |              |               |                                      |
|                                  | 02:17       |              |               | STEAL by MCKENTY, MARIAH             |
|                                  | 02:15       |              |               | TURNOVR by MEADOWS, TAYLOR           |
| MISSED JUMPER by SOLDI, CHRISTY  | 02:10       |              |               |                                      |
| REBOUND (OFF) by CABINESS, LEXUS | 02:10       |              |               |                                      |
|                                  | 02:06       |              |               | BLOCK by BROWN, ALEX                 |
|                                  | 02:06       |              |               | REBOUND (DEF) by BROWN, ALEX         |
|                                  | 02:01       |              |               | TURNOVR by MCKENTY, MARIAH           |
| MISSED JUMPER by CABINESS, LEXUS | 01:43       |              |               | BLOCK by BROWN, ALEX                 |
|                                  | 01:41       |              |               | REBOUND (DEF) by MEADOWS, TAYLOR     |
| BLOCK by SOLDI, CHRISTY          | 01:37       |              |               | MISSED LAYUP by MEADOWS, TAYLOR      |
|                                  | 01:36       |              |               | REBOUND (OFF) by (TEAM)              |
|                                  | 01:28       |              |               | TURNOVR by MEADOWS, TAYLOR           |
| STEAL by MAJORS, JLYNN           | 01:27       |              |               |                                      |
| TURNOVR by COOK, HALEY           | 01:24       |              |               |                                      |
|                                  | 01:23       |              |               | STEAL by FEHRENBACHER, TORY          |
|                                  | 01:19       | 29-26        | H 3           | GOOD! JUMPER by FEHRENBACHER, TORY [ |
| GOOD! JUMPER by SOLDI, CHRISTY   | 00:39       | 31-26        | H 5           |                                      |
|                                  | 00:19       |              |               | TURNOVR by (TEAM)                    |
| SUB IN : COLE, ASHLEE            | 00:19       |              |               | SUB IN : FEHRENBACHER, TONI          |
| SUB IN : CAGER, TRINA            | 00:19       |              |               | SUB IN : BARNARD, ALYSSA             |
| SUB OUT: CABINESS, LEXUS         | 00:19       |              |               | SUB IN : GREER, BAILEY               |
| SUB OUT: DUVALL, MADISON         | 00:19       |              |               | SUB OUT: YORK, ALLIE                 |
|                                  | 00:19       |              |               | SUB OUT: FEHRENBACHER, TORY          |
|                                  | 00:19       |              |               | SUB OUT: MEADOWS, TAYLOR             |
| MISSED 3 PTR by CAGER, TRINA     | 00:07       |              |               | REBOUND (DEF) by BARNARD, ALYSSA     |
| MISSED JUMPER by CABINESS, LEXUS | 02:09       |              |               |                                      |

HOPKINSVILLE 31, MARSHALL COUNTY 26

|                 | In    | Off | 2nd    | Fast  |       |                         |
|-----------------|-------|-----|--------|-------|-------|-------------------------|
| 2nd period-only | Paint | T/O | Chance | Break | Bench |                         |
| MARSHALL COUNTY | 4     | 4   | 3      | 0     | 2     | Score tied - 0 times.   |
| HOPKINSVILLE    | 2     | 3   | 0      | 0     | 3     | Lead changed - 0 times. |



Official Basketball Box Score -- Game Totals -- 2nd Period  
**MARSHALL COUNTY vs HOPKINSVILLE**  
 03/08/12 12 NOON CST at DIDDLE ARENA-BOWLING GREEN, KY



**MARSHALL COUNTY 26**

| ##     | Player             |   | Total  |        |        | 3-Ptr  |        |        | Rebounds |     |     | PF | TP | A | TO | Blk | Stl | Min |
|--------|--------------------|---|--------|--------|--------|--------|--------|--------|----------|-----|-----|----|----|---|----|-----|-----|-----|
|        |                    |   | FG-FGA | FG-FGA | FT-FTA | FG-FGA | FG-FGA | FT-FTA | Off      | Def | Tot |    |    |   |    |     |     |     |
| 32     | REED, RACHAEL      | c | 0-0    | 0-0    | 1-2    | 0-0    | 0-0    | 0-0    | 0        | 0   | 0   | 0  | 1  | 0 | 0  | 0   | 0   | 6   |
| 10     | FEHRENBACHER, TORY | g | 2-3    | 0-0    | 3-6    | 0-0    | 0-0    | 0-0    | 0        | 1   | 1   | 0  | 7  | 0 | 2  | 0   | 3   | 14  |
| 14     | MEADOWS, TAYLOR    | g | 3-6    | 1-2    | 1-2    | 0-0    | 0-0    | 0-0    | 0        | 2   | 2   | 0  | 8  | 0 | 2  | 0   | 0   | 14  |
| 15     | MCKENTY, MARIAH    | g | 1-3    | 1-3    | 0-0    | 0-0    | 0-0    | 0-0    | 0        | 0   | 0   | 1  | 3  | 2 | 2  | 0   | 2   | 15  |
| 20     | YORK, ALLIE        | g | 1-3    | 1-1    | 0-0    | 0-0    | 0-0    | 0-0    | 1        | 1   | 2   | 0  | 3  | 0 | 0  | 0   | 0   | 15  |
| 04     | GREER, BAILEY      |   | 0-0    | 0-0    | 0-0    | 0-0    | 0-0    | 0-0    | 0        | 0   | 0   | 0  | 0  | 0 | 0  | 0   | 0   | 0+  |
| 11     | MCKENDREE, MELANIE |   | 0-0    | 0-0    | 0-0    | 0-0    | 0-0    | 0-0    | 0        | 0   | 0   | 0  | 0  | 0 | 0  | 0   | 0   | 0+  |
| 21     | FEHRENBACHER, TONI |   | 0-4    | 0-0    | 0-0    | 0-0    | 0-0    | 0-0    | 1        | 0   | 1   | 0  | 0  | 0 | 1  | 0   | 0   | 5   |
| 33     | YORK, CAITLYN      |   | 0-0    | 0-0    | 0-0    | 0-0    | 0-0    | 0-0    | 0        | 0   | 0   | 0  | 0  | 0 | 0  | 0   | 0   | 0+  |
| 35     | BROWN, ALEX        |   | 1-1    | 0-0    | 0-0    | 0-0    | 0-0    | 0-0    | 0        | 2   | 2   | 0  | 2  | 0 | 0  | 2   | 1   | 6   |
| 43     | BARNARD, ALYSSA    |   | 1-1    | 0-0    | 0-0    | 0-0    | 0-0    | 0-0    | 1        | 3   | 4   | 2  | 2  | 1 | 0  | 2   | 0   | 5   |
| Team   |                    |   |        |        |        |        |        |        | 1        | 1   | 2   |    |    |   | 1  |     |     |     |
| Totals |                    |   | 9-21   | 3-6    | 5-10   |        |        |        | 4        | 10  | 14  | 3  | 26 | 3 | 8  | 4   | 6   | 80  |

FG % 1st Half: 9-21 42.9%  
 3FG % 1st Half: 3-6 50.0%  
 FT % 1st Half: 5-10 50.0%

Deadball  
Rebounds  
2

**HOPKINSVILLE 31**

| ##     | Player          |   | Total  |        |        | 3-Ptr  |        |        | Rebounds |     |     | PF | TP | A | TO | Blk | Stl | Min |
|--------|-----------------|---|--------|--------|--------|--------|--------|--------|----------|-----|-----|----|----|---|----|-----|-----|-----|
|        |                 |   | FG-FGA | FG-FGA | FT-FTA | FG-FGA | FG-FGA | FT-FTA | Off      | Def | Tot |    |    |   |    |     |     |     |
| 05     | SOLDO, CHRISTY  | f | 5-9    | 0-0    | 0-0    | 0-0    | 0-0    | 0-0    | 0        | 3   | 3   | 0  | 10 | 2 | 2  | 1   | 0   | 15  |
| 20     | COLE, ASHLEE    | f | 0-1    | 0-0    | 0-0    | 0-0    | 0-0    | 0-0    | 1        | 2   | 3   | 0  | 0  | 2 | 0  | 0   | 0   | 12  |
| 21     | DUVALL, MADISON | f | 3-4    | 0-0    | 0-0    | 0-0    | 0-0    | 0-0    | 1        | 2   | 3   | 1  | 6  | 0 | 0  | 0   | 0   | 12  |
| 22     | COOK, HALEY     | g | 4-6    | 3-4    | 1-2    | 0-0    | 0-0    | 0-0    | 0        | 0   | 0   | 1  | 12 | 0 | 3  | 0   | 0   | 15  |
| 32     | MAJORS, JLYNN   | g | 0-0    | 0-0    | 0-0    | 0-0    | 0-0    | 0-0    | 0        | 2   | 2   | 2  | 0  | 4 | 1  | 0   | 2   | 16  |
| 23     | CAGER, TRINA    |   | 1-3    | 1-2    | 0-0    | 0-0    | 0-0    | 0-0    | 0        | 2   | 2   | 2  | 3  | 0 | 0  | 0   | 1   | 7   |
| 33     | CABINESS, LEXUS |   | 0-2    | 0-0    | 0-0    | 0-0    | 0-0    | 0-0    | 1        | 0   | 1   | 0  | 0  | 0 | 1  | 0   | 0   | 3   |
| Team   |                 |   |        |        |        |        |        |        | 0        | 0   | 0   |    |    |   |    |     |     |     |
| Totals |                 |   | 13-25  | 4-6    | 1-2    |        |        |        | 3        | 11  | 14  | 6  | 31 | 8 | 7  | 1   | 3   | 80  |

FG % 1st Half: 13-25 52.0%  
 3FG % 1st Half: 4-6 66.7%  
 FT % 1st Half: 1-2 50.0%

Deadball  
Rebounds  
0

Officials: KRISTIE COMBS, JEFFREY ELY, JUDITH DYEHOUSE  
 Technical fouls: MARSHALL COUNTY-None. HOPKINSVILLE-None.  
 Attendance:

| Score by periods | 1st | 2nd | 3rd | 4th | Total |
|------------------|-----|-----|-----|-----|-------|
| MARSHALL COUNTY  | 16  | 10  | 0   | 0   | 26    |
| HOPKINSVILLE     | 16  | 15  | 0   | 0   | 31    |

|        | In    | Off | 2nd    | Fast  |       |
|--------|-------|-----|--------|-------|-------|
| Points | Paint | T/O | Chance | Break | Bench |
| MARSHA | 12    | 7   | 3      | 0     | 4     |
| HOPKIN | 12    | 5   | 2      | 0     | 3     |

Last FG - MARSHALL 2nd-01:19, HOPKINS 2nd-00:39.  
 Largest lead - MARSHALL by 2 1st-07:10, HOPKINS by 6 1st-03:49.

Score tied - 2 times.  
 Lead changed - 1 time.



**MARSHALL COUNTY vs HOPKINSVILLE**  
**03/08/12 12 NOON CST at DIDDLE ARENA-BOWLING GREEN, KY**  
**3rd PERIOD Play-by-Play (Page 1)**



| HOME TEAM: HOPKINSVILLE               | Time  | Score | Margin | VISITORS: MARSHALL COUNTY            |
|---------------------------------------|-------|-------|--------|--------------------------------------|
| GOOD! FT SHOT by COLE, ASHLEE         | 07:42 | 32-26 | H 6    | FOUL by REED, RACHAEL (P1T1)         |
| GOOD! FT SHOT by COLE, ASHLEE         | 07:42 | 33-26 | H 7    |                                      |
|                                       | 07:32 |       |        | TURNOVR by MEADOWS, TAYLOR           |
| GOOD! LAYUP by MAJORS, JLYNN [PNT]    | 07:14 | 35-26 | H 9    |                                      |
| REBOUND (DEF) by SOLDI, CHRISTY       | 06:36 |       |        | MISSED 3 PTR by MCKENTY, MARIAH      |
| MISSED FT SHOT by MAJORS, JLYNN       | 06:27 |       |        | FOUL by FEHRENBACHER, TORY (P1T2)    |
| REBOUND (OFF) by (DEADBALL)           | 06:27 |       |        |                                      |
| GOOD! FT SHOT by MAJORS, JLYNN        | 06:27 | 36-26 | H 10   |                                      |
|                                       | 06:25 |       |        | TIMEOUT 30sec                        |
|                                       | 06:19 |       |        | TURNOVR by FEHRENBACHER, TORY        |
| STEAL by MAJORS, JLYNN                | 06:17 |       |        |                                      |
| MISSED 3 PTR by MAJORS, JLYNN         | 06:05 |       |        | REBOUND (DEF) by YORK, ALLIE         |
| STEAL by MAJORS, JLYNN                | 05:58 |       |        | TURNOVR by YORK, ALLIE               |
| GOOD! LAYUP by MAJORS, JLYNN [FB/PNT] | 05:54 | 38-26 | H 12   |                                      |
| REBOUND (DEF) by COLE, ASHLEE         | 05:39 |       |        | MISSED JUMPER by MCKENTY, MARIAH     |
| GOOD! JUMPER by SOLDI, CHRISTY        | 05:16 | 40-26 | H 14   |                                      |
| ASSIST by CAGER, TRINA                | 05:16 |       |        |                                      |
|                                       | 05:12 |       |        | TIMEOUT 30sec                        |
| FOUL by SOLDI, CHRISTY (P1T1)         | 04:53 |       |        | MISSED FT SHOT by FEHRENBACHER, TORY |
|                                       | 04:53 |       |        | REBOUND (OFF) by (DEADBALL)          |
|                                       | 04:53 | 40-27 | H 13   | GOOD! FT SHOT by FEHRENBACHER, TORY  |
|                                       | 04:53 |       |        | SUB IN : FEHRENBACHER, TONI          |
|                                       | 04:53 |       |        | SUB OUT: MEADOWS, TAYLOR             |
| TURNOVR by COOK, HALEY                | 04:39 |       |        |                                      |
|                                       | 04:37 |       |        | STEAL by MCKENTY, MARIAH             |
|                                       | 04:27 |       |        | MISSED JUMPER by FEHRENBACHER, TONI  |
|                                       | 04:27 |       |        | REBOUND (OFF) by MCKENTY, MARIAH     |
|                                       | 04:19 | 40-30 | H 10   | GOOD! 3 PTR by MCKENTY, MARIAH       |
|                                       | 04:19 |       |        | ASSIST by YORK, ALLIE                |
| MISSED LAYUP by COOK, HALEY           | 04:08 |       |        | REBOUND (DEF) by BARNARD, ALYSSA     |
|                                       | 03:47 | 40-33 | H 7    | GOOD! 3 PTR by FEHRENBACHER, TORY    |
| TIMEOUT TEAM                          | 03:41 |       |        |                                      |
| MISSED JUMPER by COLE, ASHLEE         | 03:26 |       |        | REBOUND (DEF) by BARNARD, ALYSSA     |
|                                       | 03:01 | 40-36 | H 4    | GOOD! 3 PTR by MCKENTY, MARIAH       |
|                                       | 03:01 |       |        | ASSIST by FEHRENBACHER, TONI         |
| MISSED JUMPER by COOK, HALEY          | 02:45 |       |        |                                      |
| REBOUND (OFF) by DUVALL, MADISON      | 02:45 |       |        |                                      |
| GOOD! JUMPER by COLE, ASHLEE          | 02:33 | 42-36 | H 6    |                                      |
| ASSIST by DUVALL, MADISON             | 02:33 |       |        |                                      |
| FOUL by MAJORS, JLYNN (P3T2)          | 02:32 |       |        |                                      |
| SUB IN : CAGER, TRINA                 | 02:32 |       |        | SUB IN : MEADOWS, TAYLOR             |
| SUB OUT: DUVALL, MADISON              | 02:32 |       |        | SUB IN : BARNARD, ALYSSA             |
|                                       | 02:32 |       |        | SUB OUT: FEHRENBACHER, TORY          |
|                                       | 02:32 |       |        | SUB OUT: REED, RACHAEL               |
|                                       | 02:24 |       |        | MISSED JUMPER by MEADOWS, TAYLOR     |
|                                       | 02:24 |       |        | REBOUND (OFF) by BARNARD, ALYSSA     |
| BLOCK by SOLDI, CHRISTY               | 02:20 |       |        | MISSED TIP-IN by BARNARD, ALYSSA     |
|                                       | 02:18 |       |        | REBOUND (OFF) by BARNARD, ALYSSA     |
| STEAL by MAJORS, JLYNN                | 02:15 |       |        | TURNOVR by BARNARD, ALYSSA           |
| FOUL by SOLDI, CHRISTY (P2T3)         | 02:14 |       |        |                                      |
|                                       | 02:14 |       |        | REBOUND (OFF) by (TEAM)              |
|                                       | 02:14 |       |        | MISSED FT SHOT by MCKENTY, MARIAH    |
|                                       | 02:14 | 42-37 | H 5    | GOOD! FT SHOT by MCKENTY, MARIAH     |
|                                       | 02:12 |       |        | REBOUND (DEF) by MEADOWS, TAYLOR     |
| MISSED JUMPER by MAJORS, JLYNN        | 01:42 | 42-39 | H 3    | GOOD! JUMPER by BARNARD, ALYSSA      |
|                                       | 01:42 |       |        | ASSIST by YORK, ALLIE                |
| MISSED 3 PTR by COOK, HALEY           | 01:31 |       |        |                                      |
| REBOUND (OFF) by COLE, ASHLEE         | 01:31 |       |        |                                      |
| GOOD! JUMPER by SOLDI, CHRISTY        | 00:56 | 44-39 | H 5    |                                      |
|                                       | 00:39 | 44-41 | H 3    | GOOD! JUMPER by BARNARD, ALYSSA      |





**MARSHALL COUNTY vs HOPKINSVILLE**  
 03/08/12 12 NOON CST at DIDDLE ARENA-BOWLING GREEN, KY  
**3rd PERIOD Play-by-Play (Page 2)**



**HOME TEAM: HOPKINSVILLE**

**Time Score Margin VISITORS: MARSHALL COUNTY**

GOOD! JUMPER by SOLDI, CHRISTY 00:05 46-41 H 5  
 ASSIST by MAJORS, JLYNN 00:05

HOPKINSVILLE 46, MARSHALL COUNTY 41

|                 | In    | Off | 2nd    | Fast  |       |                         |
|-----------------|-------|-----|--------|-------|-------|-------------------------|
| 3rd period-only | Paint | T/O | Chance | Break | Bench |                         |
| MARSHALL COUNTY | 0     | 4   | 4      | 0     | 4     | Score tied - 0 times.   |
| HOPKINSVILLE    | 4     | 4   | 4      | 2     | 0     | Lead changed - 0 times. |



**MARSHALL COUNTY vs HOPKINSVILLE**  
**03/08/12 12 NOON CST at DIDDLE ARENA-BOWLING GREEN, KY**  
**4th PERIOD Play-by-Play (Page 1)**



| HOME TEAM: HOPKINSVILLE              | Time  | Score | Margin | VISITORS: MARSHALL COUNTY             |
|--------------------------------------|-------|-------|--------|---------------------------------------|
| SUB IN : CAGER, TRINA                | 08:00 |       |        | SUB IN : FEHRENBACHER, TONI           |
| SUB OUT: COOK, HALEY                 | 08:00 |       |        | SUB IN : BARNARD, ALYSSA              |
|                                      | 08:00 |       |        | SUB OUT: MEADOWS, TAYLOR              |
|                                      | 08:00 |       |        | SUB OUT: REED, RACHAEL                |
| REBOUND (DEF) by DUVALL, MADISON     | 07:50 |       |        | MISSED JUMPER by FEHRENBACHER, TONI   |
|                                      | 07:28 |       |        | FOUL by BARNARD, ALYSSA (P3T3)        |
|                                      | 07:28 |       |        | SUB IN : BROWN, ALEX                  |
|                                      | 07:28 |       |        | SUB OUT: BARNARD, ALYSSA              |
| GOOD! JUMPER by SOLDO, CHRISTY [PNT] | 07:06 | 48-41 | H 7    |                                       |
| ASSIST by COLE, ASHLEE               | 07:06 |       |        |                                       |
|                                      | 06:49 |       |        | TURNOVR by MCKENTY, MARIAH            |
| STEAL by COLE, ASHLEE                | 06:48 |       |        |                                       |
| MISSED JUMPER by SOLDO, CHRISTY      | 06:32 |       |        | REBOUND (DEF) by MCKENTY, MARIAH      |
|                                      | 06:16 | 48-44 | H 4    | GOOD! 3 PTR by MCKENTY, MARIAH        |
|                                      | 06:16 |       |        | ASSIST by FEHRENBACHER, TORY          |
| MISSED JUMPER by CAGER, TRINA        | 05:52 |       |        | REBOUND (DEF) by MCKENTY, MARIAH      |
|                                      | 05:34 | 48-46 | H 2    | GOOD! JUMPER by FEHRENBACHER, TONI    |
| FOUL by COLE, ASHLEE (P1T4)          | 05:34 |       |        | MISSED FT SHOT by FEHRENBACHER, TONI  |
| REBOUND (DEF) by COLE, ASHLEE        | 05:34 |       |        |                                       |
| SUB IN : COOK, HALEY                 | 05:34 |       |        | SUB IN : REED, RACHAEL                |
| SUB OUT: CAGER, TRINA                | 05:34 |       |        | SUB OUT: YORK, ALLIE                  |
| MISSED JUMPER by DUVALL, MADISON     | 05:31 |       |        | REBOUND (DEF) by (TEAM)               |
|                                      | 05:30 |       |        | TURNOVR by FEHRENBACHER, TORY         |
|                                      | 05:30 |       |        | SUB IN : MEADOWS, TAYLOR              |
|                                      | 05:30 |       |        | SUB OUT: FEHRENBACHER, TONI           |
| STEAL by SOLDO, CHRISTY              | 05:29 |       |        |                                       |
| GOOD! JUMPER by SOLDO, CHRISTY       | 04:51 | 50-46 | H 4    |                                       |
|                                      | 04:33 |       |        | MISSED 3 PTR by MEADOWS, TAYLOR       |
|                                      | 04:33 |       |        | REBOUND (OFF) by FEHRENBACHER, TORY   |
| FOUL by MAJORS, JLYNN (P4T5)         | 04:32 |       |        | MISSED FT SHOT by FEHRENBACHER, TORY  |
|                                      | 04:32 |       |        | REBOUND (OFF) by (DEADBALL)           |
| REBOUND (DEF) by SOLDO, CHRISTY      | 04:32 |       |        | MISSED FT SHOT by FEHRENBACHER, TORY  |
|                                      | 04:32 |       |        | SUB IN : BARNARD, ALYSSA              |
|                                      | 04:32 |       |        | SUB IN : YORK, ALLIE                  |
|                                      | 04:32 |       |        | SUB OUT: REED, RACHAEL                |
|                                      | 04:32 |       |        | SUB OUT: BROWN, ALEX                  |
| TIMEOUT 30sec                        | 04:28 |       |        |                                       |
| MISSED LAYUP by MAJORS, JLYNN        | 04:02 |       |        | REBOUND (DEF) by BARNARD, ALYSSA      |
| REBOUND (DEF) by DUVALL, MADISON     | 03:46 |       |        | MISSED JUMPER by MEADOWS, TAYLOR      |
| MISSED JUMPER by DUVALL, MADISON     | 03:20 |       |        | REBOUND (DEF) by MCKENTY, MARIAH      |
|                                      | 03:11 |       |        | MISSED JUMPER by FEHRENBACHER, TORY   |
|                                      | 03:11 |       |        | REBOUND (OFF) by YORK, ALLIE          |
|                                      | 03:08 | 50-48 | H 2    | GOOD! TIP-IN by YORK, ALLIE [PNT]     |
| MISSED JUMPER by SOLDO, CHRISTY      | 02:39 |       |        |                                       |
| REBOUND (OFF) by COLE, ASHLEE        | 02:39 |       |        |                                       |
|                                      | 02:37 |       |        | FOUL by BARNARD, ALYSSA (P4T4)        |
| TIMEOUT MEDIA                        | 02:37 |       |        |                                       |
| GOOD! FT SHOT by COLE, ASHLEE        | 02:37 | 51-48 | H 3    |                                       |
| MISSED FT SHOT by COLE, ASHLEE       | 02:37 |       |        | REBOUND (DEF) by (TEAM)               |
|                                      | 02:21 | 51-50 | H 1    | GOOD! JUMPER by MCKENTY, MARIAH       |
| TIMEOUT 30sec                        | 01:50 |       |        |                                       |
| MISSED JUMPER by MAJORS, JLYNN       | 01:50 |       |        | REBOUND (DEF) by BARNARD, ALYSSA      |
|                                      | 01:50 |       |        | SUB IN : FEHRENBACHER, TONI           |
|                                      | 01:50 |       |        | SUB OUT: MEADOWS, TAYLOR              |
|                                      | 01:32 |       |        | TIMEOUT TEAM                          |
|                                      | 01:32 |       |        | SUB IN : MEADOWS, TAYLOR              |
|                                      | 01:32 |       |        | SUB OUT: FEHRENBACHER, TONI           |
|                                      | 01:12 |       |        | MISSED 3 PTR by MCKENTY, MARIAH       |
|                                      | 01:12 |       |        | REBOUND (OFF) by BARNARD, ALYSSA      |
|                                      | 01:09 | 51-52 | V 1    | GOOD! TIP-IN by BARNARD, ALYSSA [PNT] |



**MARSHALL COUNTY vs HOPKINSVILLE**  
 03/08/12 12 NOON CST at DIDDLE ARENA-BOWLING GREEN, KY  
 4th PERIOD Play-by-Play (Page 2)



| HOME TEAM: HOPKINSVILLE              | Time  | Score | Margin | VISITORS: MARSHALL COUNTY         |
|--------------------------------------|-------|-------|--------|-----------------------------------|
| TIMEOUT TEAM                         | 00:59 |       |        |                                   |
|                                      | 00:59 |       |        | SUB IN : FEHRENBACHER, TONI       |
|                                      | 00:59 |       |        | SUB OUT: MEADOWS, TAYLOR          |
| MISSED JUMPER by COOK, HALEY         | 00:47 |       |        |                                   |
| REBOUND (OFF) by SOLDO, CHRISTY      | 00:47 |       |        |                                   |
| GOOD! TIP-IN by SOLDO, CHRISTY [PNT] | 00:43 | 53-52 | H 1    |                                   |
|                                      | 00:34 |       |        | TIMEOUT TEAM                      |
| SUB IN : CAGER, TRINA                | 00:34 |       |        |                                   |
| SUB OUT: DUVALL, MADISON             | 00:34 |       |        |                                   |
|                                      | 00:31 |       |        | SUB IN : MEADOWS, TAYLOR          |
|                                      | 00:31 |       |        | SUB OUT: FEHRENBACHER, TONI       |
|                                      | 00:16 |       |        | MISSED 3 PTR by MEADOWS, TAYLOR   |
| REBOUND (DEF) by CAGER, TRINA        | 00:15 |       |        |                                   |
|                                      | 00:14 |       |        | FOUL by FEHRENBACHER, TORY (P2T5) |
|                                      | 00:14 |       |        | FOUL by FEHRENBACHER, TORY (P3T6) |
|                                      | 00:14 |       |        | SUB IN : FEHRENBACHER, TONI       |
|                                      | 00:14 |       |        | SUB OUT: BARNARD, ALYSSA          |
| MISSED FT SHOT by MAJORS, JLYNN      | 00:12 |       |        | FOUL by YORK, ALLIE (P1T7)        |
| REBOUND (OFF) by SOLDO, CHRISTY      | 00:12 |       |        |                                   |
|                                      | 00:12 |       |        | SUB IN : BARNARD, ALYSSA          |
|                                      | 00:12 |       |        | SUB OUT: FEHRENBACHER, TONI       |
| GOOD! FT SHOT by CAGER, TRINA        | 00:08 | 54-52 | H 2    | FOUL by MEADOWS, TAYLOR (P1T8)    |
| MISSED FT SHOT by CAGER, TRINA       | 00:08 |       |        |                                   |
| REBOUND (OFF) by (TEAM)              | 00:08 |       |        |                                   |
|                                      | 00:07 |       |        | TIMEOUT TEAM                      |
| GOOD! FT SHOT by SOLDO, CHRISTY      | 00:06 | 55-52 | H 3    | FOUL by MEADOWS, TAYLOR (P2T9)    |
| GOOD! FT SHOT by SOLDO, CHRISTY      | 00:06 | 56-52 | H 4    |                                   |
| TIMEOUT TEAM                         | 00:06 |       |        |                                   |

HOPKINSVILLE 56, MARSHALL COUNTY 52

|                 | In<br>Paint | Off<br>T/O | 2nd<br>Chance | Fast<br>Break | Bench |                         |
|-----------------|-------------|------------|---------------|---------------|-------|-------------------------|
| 4th period-only |             |            |               |               |       |                         |
| MARSHALL COUNTY | 4           | 0          | 4             | 0             | 4     | Score tied - 0 times.   |
| HOPKINSVILLE    | 4           | 2          | 6             | 0             | 1     | Lead changed - 2 times. |